



HOLSWORTHY HIGH SCHOOL



Information Booklet 2024



HOLSWORTHY HIGH SCHOOL
HUON CRESCENT
HOLSWORTHY
NSW 2173
Telephone: 9825 2888
Email: holsworthy-h.school@det.nsw.edu.au



FOR MORE INFORMATION

View the full school plan at our website:

<https://holsworthy-h.schools.nsw.gov.au/about-our-school/school-planning-and-reporting.html>

For information about our school , programs and events please read our newsletters or Facebook page

<https://holsworthy-h.schools.nsw.gov.au/newsletter.html>

<https://www.facebook.com/HolsworthyHighSchool/>

At Holsworthy High School we aim to promote and celebrate learning, resilience, effort and community in all areas of school life through:

HIGH EXPECTATIONS AND ACADEMIC ACHIEVEMENT

- Consistent growth in literacy and numeracy in recent years
- Improving top end achievement in the HSC and early entry offers to university



OUTSTANDING OPPORTUNITIES FOR EVERY STUDENT

- An expanding student leadership program including a progressive SRC and innovative senior student leadership team
- Year 7 and 8 Enrichment classes



A SUPPORTIVE, CARING AND INCLUSIVE LEARNING ENVIRONMENT

- Timetabled Wellbeing lessons for Years 7-10
- New Learning and Wellbeing faculty led by the Head Teacher Welfare and including the Defence School Mentor, Student Support Officer, Aboriginal Students Coordinator, Careers Adviser, EAL/D and Learning Support Teachers.



AUTHENTIC COMMUNITY PARTNERSHIPS

- Strong relationships with Community of Schools – Hammondville Public School, Holsworthy Public School and Wattle Grove Public School
- An ongoing partnership with the Apple Education Team to improve student engagement and learning through technology



COMMITTED, EXPERT STAFF SUPPORTING EVERY STUDENT

- Staff run a variety of after school clubs and tutoring opportunities including Homework Club, Maths Boost and Art Club
- Teachers regularly provide extra support for students through mentoring and holiday HSC classes



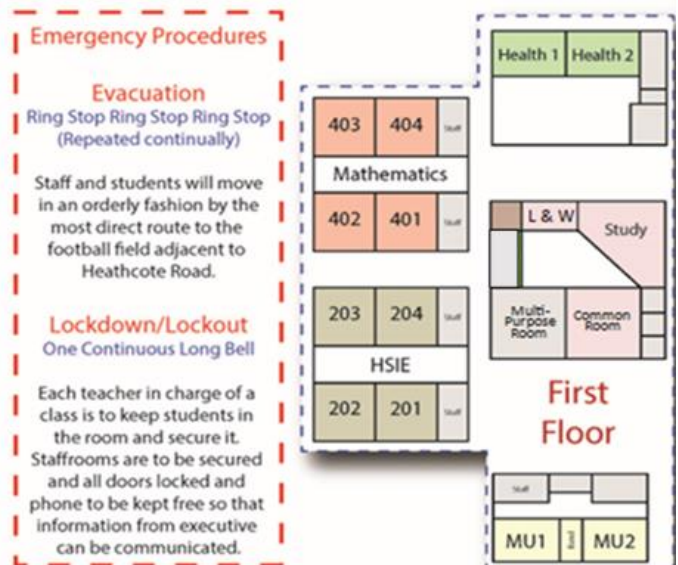
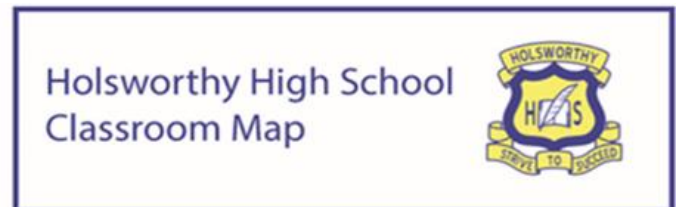
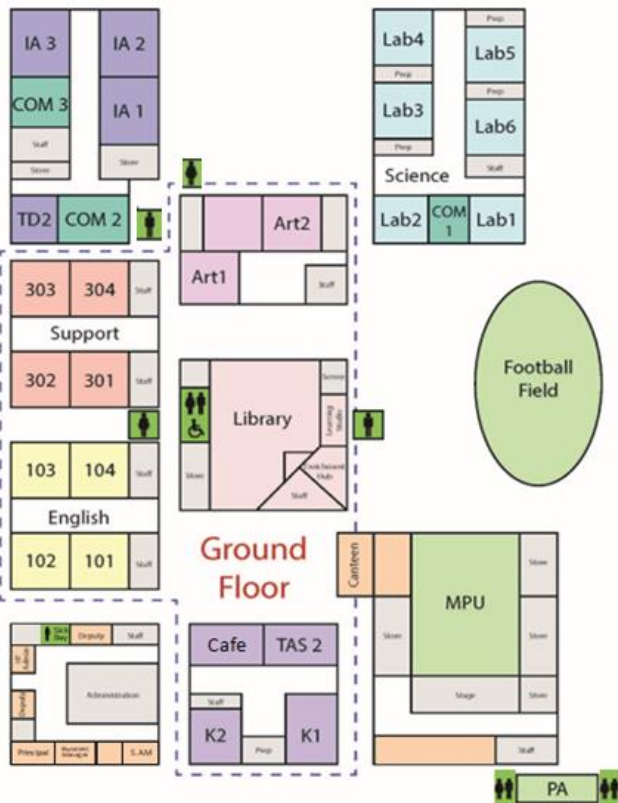
TABLE OF CONTENTS

Absences	15		Merit Scheme	9
Attendance	15		Mobile Phones	17
Bell times	6		Parent Evenings	9
Canteen	25		Parents and Citizens Association	9
Counsellor	12		Reports	9
Defence School Mentor	12		School Bytes—Make a Payment	9
Early Leave	15		Staff Carpark	15
Enrichment Class	11		Student Portal Information	10
Extra Curricular Activities	13-14		Student Support Officer	12
Fees	23-24		Student Welfare	16
First Aid	12		Subject Selection Evening	9
Homework	16		Technology Program	11
Lateness	15		Term Dates	5
Library	12		Uniform	18-22
Leaving School Grounds	15		Who Can Help	7
Map of School	5		Year Advisers Year 7, 2024	8

2024 TERM DATES

TERM 1		Tuesday 30 January	Staff only
	First Day	Thursday 1 February	Years 7, 11, 12
		Friday 2 February	All Years
	Last Day	Friday 12 April	
TERM 2		Monday 29 April	Staff only
	First Day	Tuesday 30 April	All Years
	Last Day	Friday 5 July	
TERM 3		Monday 22 July	Staff only
	First Day	Tuesday 23 July	All Years
	Last Day	Friday 27 September	
TERM 4	First Day	Monday 14 October	All Years
	Last Day	Wednesday 18 December	Students
	Last Day	Friday 20 December	Staff only

SCHOOL MAP



BELL TIMES

Roll Call	8:50	-	9:00
Period 1	9:00	-	10:00
Period 2	10:00	-	11:00
ASSEMBLY (Monday)	10:50	-	11:00
YEAR ASSEMBLY (Wednesday)			
RECESS	11:00	-	11:20
Period 3	11:20	-	12:20
Period 4	12:20	-	1:20
LUNCH	1:20	-	2:00
Period 5	2:00	-	3:00

WHO CAN HELP?

PRINCIPAL	
Mark Watkins	
DEPUTY PRINCIPAL YEARS 8, 10, 12	DEPUTY PRINCIPAL YEARS 7, 9, 11
Mr T. Grew	Ms J. Davis

HEAD TEACHERS

Administration	Mr K. McDonald
English	Ms B. Portolan
HSIE	Ms L. M. Abdow
Maths	Mr S. Wiles
PDHPE, Music & Language	Mr J. Papac
Science & Visual Arts	Ms J. Gorgovski
Special Education	Ms L. Kenneally
TAS	Ms B. Harvey
Welfare	Ms S Siqueira
Teaching and Learning	Ms N. Cupac
Business Manager	Mrs M. Monaghan
Office Administration Manager	Mrs L. Cole

TEACHERS IN CHARGE OF:

Accidents - Ms J .Davis	Level System - Ms S. Siqueira
Art - Ms R. Booker	Library - Ms B. Dunn
Attendance - Deputy Principals	Lost Property - Office
Bandroom – Mr A. Cavaliere	Merit System - Ms S. Borda
Boys Adviser - Mr A. Di Martino	NESA - Mrs M. Monaghan
Canteen - Ms M. McDonald	Rolls - Mrs S Horsman
CAPA Co-Ordinator - Ms R. Booker	Senior Leadership – Mr M. Bayndrian
Careers - Ms J. O’Neill	Sport - Mr P. Aroney
Counsellors - Ms D. Collier / Mr E. Fracarossi	Student Representative Council - Ms J. O’Neill
Debating - Ms B. Portolan	Travel passes - Mrs S. Oud
Defence Transition Mentor - Mrs T. Carr	Uniforms - Ms K Bijelic, Mr S. Wiles
Early Leave - Office	

STUDENT ADVISERS:

Enrichment Class—Mr T. Grew	Year 7 - Ms R. Donya / Ms M. Morthorpe
Enrolments - Deputy Principals	Year 8 - Ms R. Jolly / Mr M. O’Brien
Fees - Ms L. Cole	Year 9 - Mr K. Ryan
First Aid - Mrs I. Bankowski / Ms C. Eisenhuth	Year 10 - Mr D. Rush/Ms Dunn
Girls Adviser - Ms S. Goovan	Year 11 - Ms F. Bell/Mr K. McDonald
Integration Support - Ms S. Siqueira	Year 12 - Ms E. Stoppino / Mr J. Dasic
Language - Mr Di Martino	
Learning Assistance Ms S. Siqueira	

YEAR ADVISORS (whole school)



Ms Donya Yr 7



Ms Morthorpe Yr7



Ms Jolly Yr8



Mr O'Brien Yr 8



Mr Ryan Yr 9



Mr Rush Yr10



Ms Dunn Yr 10



Ms Bell Yr 11



Mr McDonald Yr 11



Ms Stoppino Yr 12



Mr Dasic Yr 12

COMMUNICATION

Clear and effective communication with parents is important in every school. A variety of strategies are used to convey information to parents at Holsworthy High School.

Letters or text messages are sent home when there are variations to the school day. Information may also be available on the school website, official school Facebook page and via the Parent Portal. If unsure about school organisation please contact the Office.

Parents & Citizens Association

The school has an active P&C Association. Meetings are held in the Library on the second Monday of every month commencing at 5.00 pm.

Membership is \$1 and further information may be obtained by phoning the school. Details of the Office Bearers and their phone numbers will be distributed early in the school year.

All parents are welcome to attend. The school looks forward to a mutually rewarding association with our parents and to their interest and co-operation in our planning for the future.

Parent / Teacher Evenings

There will be two evenings held during the year where parents can discuss their child's progress with classroom teachers. All parents are strongly encouraged to attend.

In 2024 these nights will be:

3 April - Whole school

16 September - Whole school

School Bytes Portal—Make a Payment

Our school has implemented a system called School Bytes to manage payments. Parents/carers can visit the School Bytes portal at any time to make a payment online, view payment history and apply credit. Please use the link below to register for School Bytes, login to School Bytes and to access all of the 'How to Guides'

https://portal.schoolbytes.education/auth/login?return_to=https%253A%252F%252Fportal.schoolbytes.education%252F&error=unauthenticated

Holsworthy High School introduced a merit scheme designed by the SRC (Student Representative Council). The aim was to develop a simple merit system which recognises positive student behaviour or achievements in a timely and visible way. Students receive Merit Points from classroom teachers for a variety of reasons. They may also receive points for participation in school activities, performances, sporting events, representative roles and volunteering.

When predetermined point levels are gained, students will receive a Yellow, Blue or White level award.

Subject Selection Evening

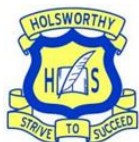
Subject Selection Evening is held for the parents of students in Years 8 and 10. These are information nights that provide guidance about the career pathways, subject selections, ROSA and HSC requirements.

In 2024 Subject Selection Evening will be held on 5 August.

Reports

Reports are issued twice per year at the end of each semester.

If a parent requires urgent information concerning their child's progress, an appointment can be made through the Office to consult with the Student Year Adviser, Head Teacher or relevant Deputy Principal.



Parent Portal Registration

Staying in touch with your child's learning is easy with the Sentral Parent Portal. Receive secure news items regarding your child's school on your mobile, tablet or computer.

The Sentral Parent Portal lets you;

- stay informed with your targeted news feed
- receive messages from your child's teachers
- browse school documents and resources
- receive your child's report cards electronically,
- book and manage parent/teacher night interviews
- provide permission and make payments for school activities
- pay your child's school fees
- be notified of absences
- respond to unexplained absences or advise the school in advance of planned absences.

The Parent Portal is a useful resource for staying in touch with your child's school

REGISTRATION PROCESS:

Step 1: Registration

Visit <https://holsworthyhs.sentral.com.au/portal2/#!/register> and complete registration.

You must use a **valid email address to create your username**. Make a note of the email you entered which will be your username and the password to access the parent portal once finalised.

Step 2: School Verification & Portal link

When you have successfully registered and been approved by the school, you will receive an email confirming your registration and a link to access the parent portal. You can also login into your parent portal via the following link:

<https://holsworthyhs.sentral.com.au/portal2/#!/login>

You will be prompted to enter your username (email address) and the password you created.

Step 3: Registration Access Key

Once step 2 is successfully completed, you will receive an access key via email.

To see information from the school and to link to a specific child, please enter the **access key** provided in your email. Please note that the access key is case sensitive so copy it into the box provided on screen, exactly as it appears in the email.

Step 4: Sentral Parent Portal App

Visit your app store and download **Sentral for Parents**. Enter your username (email address) and the password you created to gain access.

I am confident that you will see the benefits of your registration immediately and that the Parent Portal will become more and more significant in your day to day management of your child's enrolment at our school.

Should you experience any difficulties please do not hesitate to contact Mr Rao at the school for assistance.

ENRICHMENT CLASS

Holsworthy High School has an Enrichment class in Year 7 and Year 8 to cater to the needs of talented students. Talented students are those whose skills are distinctly above average in one or more key learning area.

Research tells us that capable students can benefit greatly from working with others of similar ability. Not only do students have the opportunity to work with students of similar ability, they also enjoy challenging and more complex work. Teachers have developed programs that incorporate both accelerated and enriched learning.

Positions in the Year 7 Enrichment Class are dependent on student performance in literacy, numeracy and writing skills. Student primary school scores are reviewed in conjunction with the results from this test for eligibility. Students who do not gain immediate first round entry may be put on a waiting list for placement. Parents may choose to provide additional information about their child's achievement, including test results from other schools and their primary school portfolio. Students must be enrolled at Holsworthy High School for Year 7 the following year to be considered for this class.

The Enrichment Class will continue in Year 8 in a combination of English, Science, PDHPE, History and Geography. Mathematics is timetabled on a separate line and is graded according to individual academic achievement in Year 7. From Year 9 the core subjects are graded according to student achievement.

Positions in the Enrichment Class are reviewed at the end of each semester.

TECHNOLOGY PROGRAM

IMPORTANT NOTICE: DO NOT PURCHASE AN IPAD. THE DEVICE MUST BE SUPPLIED BY THE SCHOOL.

The iPad fleet is managed by the school. Restrictions are in place to avoid distractions, prevent students from accessing apps that are not school related and to ensure the teacher can effectively deliver lessons. The apps, hardware and accessories are the same for every student.

Our Technology Levy covers much more than just the iPad itself. This levy covers;

- Rental of an iPad, Apple Pencil, and Keyboard
- Professional development for our staff to develop great teaching material
- Bootcamp training by an Apple Training Specialist
- Specific Apps for engaging lessons
- Technical support to keep the iPads running

Please report all damage and loss to the library as soon as possible. It is important not to lose, misplace or damage your iPad or further fees may be applicable .

For more detailed information regarding our iPad Program please see the links below.

<https://sites.google.com/education.nsw.gov.au/holsworthyhighschool/home>

https://holsworthy-h.schools.nsw.gov.au/content/dam/doi/sws/schools/h/holsworthy-h/information-and-resources/Holsworthy_High_School_Technology_Program_b.pdf

STUDENT SERVICES AND FACILITIES

Library

The study area provides an opportunity for teachers to extend class work with enrichment activities, individually or in small groups. The area also includes the senior study, which is used by senior classes as a study area when they do not have timetabled lessons.

The Library is open to all students before school, at morning recess and lunchtime. Students are welcome to use the library for research, homework, reading magazines or for general interest reading.

Students in Years 7-10 may borrow up to four books for a two-week period. Year 7 are given orientation lessons at the start of the year and are shown how to use our computerised catalogue.

Defence School Mentor

Mrs Carr is employed as a Defence School Mentor. She is part of the school's Learning and Support Faculty and her role is to assist students during the transition periods of relocation for defence families. Students may approach Mrs Carr directly or parents may make an appointment. Her office is located in the Learning Centre.

Student Support Officer

Mrs Bijelic, or Ms B as the students know her, is the school's Student Support Officer. Ms B is a part of the school's Learning and Wellbeing Faculty. Her role is to enhance the wellbeing and learning outcomes of students, by providing support and guidance in both one on one situations, and in group settings.

Counselling

School Counsellors are appointed to schools to provide counselling, assessment, advice or referral to outside agencies for students and parents regarding educational, social and personal support.

There is a counsellor on site every day. Students can see the counsellor to make an appointment and parents can make contact by telephone and / or make an appointment through the School Office.

Sickness and First Aid

Students who suffer illness or minor injury during the course of the school day should inform their teacher and will be given whatever first aid is necessary.

As facilities for treating sick children are limited, please do not send children who are exhibiting signs of illness to school. Whilst the school has several members of staff with a First Aid Certificate we do not have a resident nursing sister and consequently only minor first aid can be given. For more serious injuries the ambulance will be called and students taken to hospital. Where necessary and where possible, parents are contacted in cases of serious sickness or injury.

EXTRA CURRICULAR ACTIVITIES

There are many different extra curricular activities and clubs available to students at Holsworthy High School providing them with outstanding opportunities.

Band

Students can form various popular music and rock bands and have the opportunity to use the bandroom during lunchtimes for rehearsals.



Debating and Public Speaking - Ms Portolan
Holsworthy High School has a strong tradition of success in debating and public speaking. The school runs an excellent debating and public speaking program providing students with many opportunities to participate in a range of competitions.

Holsworthy teams have won the Premier's Debating Challenge and been SSW Regional Winners and State Quarter Finalists along with being Zone Finalists on many occasions. Students are also encouraged to enter the Quota International Competition, a prestigious annual speaking leadership event. Also, in 2018 a Year 7 student won the Stage 4 Armistice Poetry Prize and had the honour of reciting his poem in front of 2,000 people on Armistice Day at Liverpool.

Games Club—Mr Osborne

A games club meets on Thursday afternoon. A large variety of games are offered including; board games, card games, miniature and dice games. A committed core group attend every week and others attend when they are available. Games are a great way for students to develop social skills, spatial reasoning, deductive thinking and learn to balance both tactical and long term strategic decisions.

Homework Club - Ms Siqueira

Homework Club is offered one afternoon a week. Students can work on assignments and homework in the school Library with the aid of qualified supervising teachers.

LEAPS - Mr Aroney

Leaps is a mentoring program involving Year 9 students and lawyers from prominent city law firms.



Maths Boost – Maths Faculty

Professional and free Mathematics tutoring is available to students on Wednesday between 3.00 and 4.00 pm. Students of all ability levels from Years 7 to 10 are encouraged to attend.

Peer Support - Ms Siqueira

Peer Support provides students with an opportunity to develop leadership skills while supporting younger students in their first year at high school. Peer support leaders teach social skills, lead peer discussions and provide useful information to younger students. They become leading role models in the school community.

EXTRA CURRICULAR ACTIVITIES continued

Premiers Reading Challenge – Ms Dunn

Students are encouraged to participate in the Premiers Reading Challenge which is strongly supported in the school.

Sporting Teams

Holsworthy students have an opportunity to participate in a variety of team and individual sporting competitions throughout the year. Some include; volleyball, swimming, soccer, cricket, AFL, netball and Rugby League. The school has enjoyed great success competing at local, regional, state and national levels.



Visual Arts Group – Ms Booker

A popular Visual Arts group meets after school for an hour once a week. Students are given an opportunity to develop, explore and share their art.



Volunteering - Ms O'Neill

Holsworthy High School runs an extensive volunteering program open to all students across year groups. Students are issued a volunteering logbook where they can log their school service / volunteering hours, from both in school and outside school volunteering activities. Bronze, Silver, Gold, Diamond and Black Opal awards are available for students to strive towards achieving.

Students can achieve multiple awards during their time at Holsworthy High School and the awards are beneficial in helping students to gain part time work and early entry into University.



ATTENDANCE

Students are required to have a satisfactory record of attendance and punctuality at school across all years. The NSW Department of Education considers that 90% is the minimum acceptable rate of attendance. Sport is a mandatory and integral part of the school curriculum. Students are required to attend sport. Doctor and dentist appointments (other than emergencies) should be organised outside of school hours.

SMS – Notification of Absence or Lateness

When a student is absent or late the school will send a text message to a parent's mobile (to mother by default unless otherwise requested). A reply by text to the school with explanation can be sent in lieu of sending a note when the student returns to school.

Lateness

Students arriving late to school during Roll Call must report to Late Roll Call in the Library. Students arriving after 9.00 am need to sign in electronically at the Front Office. Students should have a note explaining their lateness. Please mark note with Year and Roll Call number.

Absence Notes

When students are absent parents need to inform the school of the absence and the reason for it. This can be done by bringing an explanation note to the Front Office on the day the student returns to school, by phoning the school on the day of absence or sending a return text upon receiving sms notification. Notes must be signed by a parent/guardian and preferably written by them. Parents/Guardians will be informed should unacceptable absences become apparent.

Early Leave Pass

Any student (Years 7-12) who is required to leave the school grounds before the normal finishing time needs to bring a note (signed by parent or guardian). The note is to be shown to their teacher enabling them to leave class early, go to the Front Office and sign out electronically before they leave school grounds. An early leave pass will be issued when they sign out.

Leaving the School Grounds:

No student is permitted to leave the school premises during the day without permission. This includes senior students accessing their cars.

Year 12 students do not attend roll call but instead sign in at the Front Office. Senior students are permitted to arrive for their first timetabled lesson of each day. Students can leave at the completion of their last timetabled lesson for the day or at the end of period 4, whichever is later. Alternatively, students can elect to stay at school and complete independent study in the Library.



School grounds must be secure and safe for students despite various areas being available for use by vehicles.

Due to pedestrian safety and traffic congestion issues, parents are asked to refrain from driving onto the school grounds unless they have official business ie. an appointment with staff. The staff carpark is for the use of staff and delivery vehicles only and not for use by parents and students to drop off and pick up children.

Parents are encouraged to use the appropriate areas out the front of the school when needed. We would like to thank the majority of families who take care to behave responsibly and park in safe and appropriate locations outside the school.

HOMWORK

“Homework is a valuable part of schooling. It allows for practising, extending and consolidating work done in class. Homework provides training for students in planning and organising time and develops a range of skills in identifying and using information resources. Additionally, homework establishes habits of study, concentration and self-discipline.” (NSW Department of Education)

The Holsworthy community of schools have a combined belief:

- That homework should be a purposeful learning experience, designed to consolidate and reinforce or extend concepts already taught in class. Parents and caregivers, students and teachers are vital to the dynamics generated by the homework partnership.
- That homework fosters and develops mature study habits, self discipline and a life-long love of learning.
- That homework should be administered with a balanced approach, in recognition that learning also occurs outside the formal school environment.

Student access to google classrooms across key learning areas, will allow them to keep up to date with their work and communicate with their teachers.

STUDENT WELLBEING

Holsworthy High has a strong Wellbeing Policy operating in the school. The welfare of students is nurtured by our Year Advisors, Counsellors, Welfare Head Teacher, Girls and Boys Advisers, Student Support Officer, Defence School Mentor, Careers Adviser as well as Learning Support Teachers. There are regular welfare meetings where welfare strategies are discussed and actively pursued to support the changing needs of students across all stages of their learning. Personalised and differentiated learning and support allows all students to reach their full potential. There is targeted support for students at the school level. Interventions are tailored to the individual needs of students and are co-ordinated to access expertise from across the school community.

Students from Years 7-10 also have a lesson focusing on Wellbeing each fortnight with their Year Adviser.

Detention:

An after school detention programme operates on Thursday afternoon from 3.00 pm to 4.00 pm in the Library. Students have the opportunity to complete independent study while on detention and have access to computer technology. Parents will be notified when their child is issued with a detention.

If parents do not want their child to attend the detention they need to inform the teacher who issued the notification in writing prior to the nominated detention. Students may complete the detention as 3 x 20 minutes at lunchtimes instead of after school.

Out of Bounds

Some areas are “out of bounds” for students. This is because the areas are either dangerous, private or they do not have teacher supervision. Such areas include all roofs, car parks, teacher staffrooms, prep rooms and classrooms when a teacher is not present. Out of bound areas in the playground are marked with red lines.

Prohibited Items

As in all state high schools items that are prohibited include weapons, drugs, aerosol cans, thick permanent markers, lasers and other dangerous items.

Prohibited items will be immediately confiscated. The police will be notified as per DOE policy in cases of illegal items.

MOBILE PHONES

The NSW Government's mobile phone policy states, "Students are not allowed to use mobile phones at school, including during recess and lunch."

Holsworthy High School follows the Department of Education's 'Off and Away' policy. This means that students will need to have their mobile phones turned off and out of sight from the moment they enter school grounds in the morning until the time they leave in the afternoon. The ban includes the entire school day including recess and lunch time. As this is a ban, like any banned items at school, there are significant consequences for phone breaches.

We have developed a four-step approach which is designed to give students a couple of warnings and communicate clearly with their parents before such consequences are implemented.

MOBILE PHONE PROCEDURE "OFF AND AWAY"

NSW DEPARTMENT OF EDUCATION
POLICY STATEMENT



Students are not allowed to use mobile phones at school, including during recess and lunch.

STEP 1

- Student will hand their phone in at the office and can collect it at the end of the day.
- An email will be sent to the parents informing them that the phone was confiscated.
- This will be the first warning.

STEP 2

- Student will hand their phone in at the office and can collect it at the end of the day.
- An email will be sent to the parents informing them that the phone was confiscated.
- This will be the second warning.

STEP 3

- Student will hand their phone in at the office and will be referred to a Deputy Principal
- Formal Caution issued, which is a written warning and parents will be contacted.
- This is the third warning.

STEP 4

- If there is a fourth occasion, despite three warnings, including one in writing, the student may be suspended as per the Formal Caution.

Department of Education Mobile Phone Policy

<https://education.nsw.gov.au/policy-library/policies/pd-2023-0480>

SCHOOL UNIFORM

Holsworthy High School is a uniform school.

It is the expectation that all students attending our school will be dressed in full school uniform. School uniform promotes a sense of belonging for students and creates a positive identity for the school community. School uniforms also contribute to the personal safety of students by allowing easier recognition of students inside the school and in the community. Holsworthy High School expects students to wear the uniform during school hours, while travelling to and from school and when engaged in school activities out of school hours.

Students who consistently wear school uniform are acknowledged through Semester Reports and the Merit Scheme while students out of uniform are unable to represent the school or participate in certain events or duties. They may also incur recess and afterschool detentions. Year Advisers and Head Teachers will contact parents in an endeavour to support these students wearing uniform.

The uniform requirement is as follows:

BOYS	GIRLS
<p>Shirt A collared full button shirt (midford style), with a school crest on the pocket.</p> <p>Junior Boys (Years 7-8) wear yellow</p> <p>Middle School Boys (Years 9-10) wear sky blue</p> <p>Senior Boys (Years 11-12) wear white</p>	<p>Shirt A collared full button front shirt (midford style), with a school crest on the pocket.</p> <p>Junior Girls (Years 7-8) wear yellow</p> <p>Middle School Girls (Years 9-10) wear sky blue</p> <p>Senior Girls (Years 11-12) wear white</p>
<p>Pants Grey dress school shorts OR full length grey trousers.</p> <p>Jumpers Navy blue sloppy-joe with the school crest OR navy blue zip-up jacket with school crest. (School blazer and tie is optional)</p> <p>Footwear Totally black covered shoes with grey or white socks.</p> <p>Sport / PE Navy blue and gold polo shirt. Navy blue shorts or microfiber trackpants. Fully enclosed lace up joggers.</p>	<p>Skirt or Pants Junior girls - Navy blue box pleat style skirt OR navy blue pants OR navy blue tailored shorts purchased at Moorebank Uniform Shop.</p> <p>Senior girls – Holsworthy tartan box pleat skirt or navy blue pants OR navy blue tailored shorts purchased at Moorebank Uniform Shop.</p> <p>Jumpers Navy blue sloppy-jo with the school crest OR navy blue zip-up jacket with school crest. (School blazer and tie is optional)</p> <p>Footwear Totally black covered shoes with grey or white socks.</p> <p>Sport / PE Navy blue and gold polo shirt. Navy blue shorts or microfiber track pants. Fully enclosed lace-up joggers.</p>
<p>Note:</p> <ul style="list-style-type: none"> Undershirts may be worn under uniforms. They should be tucked in and match the year shirt colour, with no obvious images or text showing through the school shirt. Year 7, 8, 9 and 10 students can wear full sports uniform on sport days (as per timetable). Items not covered in this policy should be considered to be out of uniform if they detract from the overall look of the uniform. <u>Offensive slogans or prints on clothing are not acceptable</u> 	



HOLSWORTHY HIGH SCHOOL

YEARS 7 & 8 UNIFORMS



YEARS 9 & 10 UNIFORMS



SPORT/PE UNIFORMS



**APPROVED
SHOES**



HOLSWORTHY HIGH SCHOOL



SCHOOL UNIFORM PRICE LIST

GIRLS SUMMER UNIFORM			
Blouse Years 7/8	Lemon short sleeve with school logo embroidered	from	\$ 38.99
Blouse Years 9/10	Sky blue short sleeve with school logo embroidered	from	\$ 38.99
Blouse Years 11/12	White short sleeve with school logo embroidered	from	\$ 38.99
Junior Skirt	Navy box pleat with zip pocket	from	\$ 56.99
Senior Skirt	Blue check box pleat with zip pocket	from	\$ 58.99
Junior/Senior Shorts	Special design navy with 2 side pockets zip front	from	\$ 39.99
Cap	Navy with HHS insignia embroidered		\$ 18.99
School Tie	Navy with school logo		\$ 26.99
Jumper	Fleecy Navy with school logo embroidered	from	\$ 41.99
Pullover	Navy Merino Wool with school logo embroidered	from	\$ 63.99
Jacket	Microfibre navy with logo embroidered	from	\$ 69.99
Socks	Red Robin white	from	\$ 4.99
GIRLS WINTER UNIFORM			
Blouse Years 7/8	Lemon short sleeve with school logo embroidered	from	\$ 38.99
Blouse Years 9/10	Sky blue short sleeve with school logo embroidered	from	\$ 38.99
Blouse Years 11/12	White short sleeve with school logo embroidered	from	\$ 38.99
Slacks	Navy with 2 side pockets belt loop	from	\$ 49.99
Jumper	Fleecy Navy with school logo embroidered	from	\$ 41.99
Pullover	Navy Merino Wool with school logo embroidered	from	\$ 63.99
Jacket	Microfibre navy with logo embroidered	from	\$ 69.99
Jacket	Flying jacket navy polar fleece lined embroidered	from	\$ 66.99
GIRLS/BOYS SPORTS UNIFORM – SUMMER/WINTER			
Polo Shirt	Navy/Gold with school logo embroidered	from	\$ 41.99
Shorts	Stretch microfiber navy zip pocket with insignia	from	\$ 38.99
Jacket	Microfibre navy with logo embroidered	from	\$ 69.99
Trackpants	Microfibre navy with zip pocket NEW	from	\$ 38.99
SCHOOL BAG LIFETIME WARRANTY			
School Bag	Back pack navy/black LIFETIME WARRANTY	large	\$ 89.99
ALL PRICES ARE SUBJECT TO ALTERATION			

SCHOOL UNIFORM PRICE LIST

BOYS SUMMER UNIFORM			
Blouse Years 7/8	Lemon short sleeve with school logo embroidered	from	\$ 38.99
Blouse Years 9/10	Sky short sleeve with school logo embroidered	from	\$ 38.99
Blouse Years 11/12	White short sleeve with school logo embroidered	from	\$ 38.99
School Tie	Navy with school logo		\$ 26.99
Shorts	Grey with zip pocket	from	\$ 26.99
Cap	Navy with HHS insignia embroidered		\$ 18.99
Jumper	Fleecy Navy with school logo embroidered	from	\$ 41.99
Jacket	Microfibre navy with logo embroidered	from	\$ 69.99
Socks	Red Robin white	from	\$ 4.99
BOYS WINTER UNIFORM			
Blouse Years 7/8	Lemon short sleeve with school logo embroidered	from	\$ 38.99
Blouse Years 9/10	Sky short sleeve with school logo embroidered	from	\$ 38.99
Blouse Years 11/12	White short sleeve with school logo embroidered	from	\$ 38.99
Trousers	Grey gaberdine	from	\$ 29.99
Jumper	Fleecy Navy with school logo embroidered	from	\$ 41.99
Pullover	Navy Merino Wool with school logo embroidered	from	\$ 63.99
Jacket	Microfibre navy with logo embroidered	from	\$ 69.99
ALL PRICES ARE SUBJECT TO ALTERATION			

**Holsworthy High School uniform is sold through
Moorebank Uniforms and Embroidery**

Shop 30 Moorebank Shopping Village (Stockton Avenue)

Phone: 9602 4387

Fax: 9822 2006

2024 SCHEDULE OF SCHOOL CONTRIBUTIONS

YEAR 7:			
	IPAD Setup fee	\$100.00	
	IPAD Technology	\$200.00	
	TAS	\$ 80.00	
	TOTAL FOR YEAR 7		\$380.00
YEAR 8:			
	IPAD Technology	\$ 200.00	
	Language	\$ 20.00	
	TAS	\$ 50.00	
	TOTAL FOR YEAR 8		\$270.00
YEAR 9:	iPad Technology		\$ 200.00
	Electives (as appropriate)		
	Café Skills 100 Hours	\$ 60.00	_____
	Ceramics 100 Hours	\$ 20.00	_____
	Design and Technology	\$ 50.00	_____
	Food Technology	\$ 100.00	_____
	Industrial Technology – Timber	\$ 80.00	_____
	Visual Art	\$ 40.00	_____

	TOTAL FOR YEAR 9		\$ _____
YEAR 10:	iPad Technology		\$ 200.00
	Electives (as appropriate)		
	Café Skills 100 Hours	\$ 60.00	_____
	Ceramics 100 Hours	\$ 20.00	_____
	Design and Technology	\$ 50.00	_____
	Food Technology	\$ 100.00	_____
	Industrial Technology – Timber	\$ 80.00	_____
	Visual Arts	\$ 40.00	_____

	TOTAL FOR YEAR 10		\$ _____

2024 SCHEDULE OF SCHOOL CONTRIBUTIONS continued

YEAR 11:	iPad Technology		\$ 200.00
	Electives (as appropriate)		
	Industrial Technology – Timber	\$ 80.00	_____
	VET Construction	\$ 70.00	_____
	VET Hospitality – (Food and Beverage)	\$ 180.00	_____
	Hospitality Uniform	\$ 30.00	_____
	Visual Arts	\$ 50.00	_____
	TOTAL FOR YEAR 11		\$ _____
YEAR 12:	iPad Technology		\$ 150.00
	Electives (as appropriate)		
	Industrial Technology – Timber *	\$ 80.00	_____
	VET Construction	\$ 70.00	_____
	VET Hospitality – (Food and Beverage)	\$ 160.00	_____
	Visual Arts *	\$ 60.00	_____
	* Additional costs may be incurred depending on projects chosen.		
	TOTAL FOR YEAR 12		\$ _____

* Paper and resource levies are based on general school costs eg. Paper, sporting equipment, Library resources, text books, software programs etc which must be bought from school funds

* Calculators

Maths requires all students to have a scientific calculator. Students are only able to use certain calculators in the HSC exams. For ease of instruction it is preferred that all students, where possible, use the same model calculator Casio fx82-AU.

The school canteen purchases calculators in bulk and on-sells to students at non-profit from the school canteen.

Year 7 will be able to purchase the recommended scientific calculator from the school.

Holsworthy High School Canteen

Sandwiches - Rolls - Wraps

Assorted ready made wraps, rolls and sandwiches are on the counter daily OR place an order by 10.30am

Egg	\$ 4.00	Tomato	\$5.00
Vegetemite	\$ 4.00	Cheese	\$5.00
Salad	\$ 6.20	Caesar	\$7.00

Make your own...pick a bread and pick a meat all \$5.50

- | | |
|---------|---------------|
| - Roll | - Tuna |
| - Wrap | - Ham |
| - Bread | - Chicken |
| | - Beef / Pork |

Add extra filling

- | | |
|-----------|--------|
| - Avocado | \$1.00 |
| - Salad | \$1.50 |
| - Lettuce | \$0.50 |
| - Cheese | \$0.50 |
| - Tomato | \$0.50 |

Add a dressing....Mayonnaise, Hommus, Ranch, Tzatziki (home made) all \$0.30

Freshly made on the premises

Hot Food

- | | |
|---------------------------------|----------|
| - Fried Rice | \$5.50 |
| - Spaghetti Bolognese | \$5.50 |
| - Chicken Noodles (Maggi) | \$3.20 * |
| - Chicken Chips (Goujon) | \$4.00 * |
| - Chicken Tenders (with chilli) | \$5.50 * |
| - Lasagne | \$5.50 |
| - Garlic Bread | \$3.00 * |
| - Ham and Cheese melts | \$3.80 |

Home made Pizza on Turkish Base \$5.00

- Chicken & Pineapple
- Ham & Pineapple
- Cheese & Tomato
- Vegetarian – baby spinach, cherry tomatoes, goats cheese, pineapple, grated cheese

Burgers

- | | |
|----------------------------|--------|
| Cheeseburger | \$5.50 |
| Chargrilled Chicken Burger | \$5.50 |

* Occasional Food

Snacks

- Snack box – crackers, cheese, tomato, cucumber and home made dip \$4.00
- Custard & strawberries \$2.50
- Yoghurt & strawberries \$2.50
- Muesli & yoghurt \$2.50
- Buttered Roll \$1.50
- Frozen Choc Milk Cup \$1.00
- Frozen Fruit Juice Cup \$1.00
- Twisted Frozen Yogurt Cup \$2.50
 - Rice sticks \$1.00
 - Popcorn \$1.00

Fruit - Mixed fruit tub \$3.50

Others at market price

Apple, Orange, Pineapple tub, Watermelon tub, Rockmelon tub

Salads - \$8.00

- | | |
|--|--------|
| - Egg | - Tuna |
| - Chicken | - Ham |
| - Pumpkin (cherry tomatoes, feta cheese, capsicum, shallots, roasted pumpkin & baby spinach) | |

Daily Specials - \$5.50

- Butter Chicken & Rice
- Chicken Stir Fry
- Spinach & Chicken Fettucine
- Ricotta & Spinach Agnolotti
- Zucchini Slice with side salad
- Veggie Bake
- Ravioli

Drinks

- | | |
|------------------------------|--------|
| - Water | \$2.00 |
| - Up & Go | \$2.50 |
| - Chocolate Milk Shake | \$3.50 |
| - Soft drink cans (no sugar) | \$2.50 |
| - Poppers (100% juice) | \$1.50 |